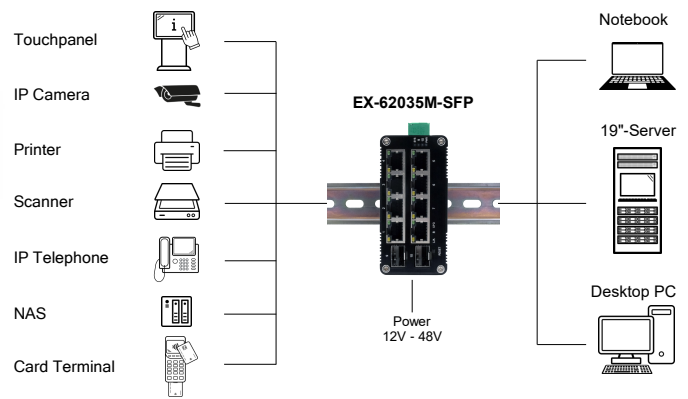


Bild / Picture



Web-Managed 10-Port Mini Gigabit Switch mit 2x Gigabit SFP Slots

Anwendung / Application



Web-Managed 10-Port Mini Gigabit Switch with 2x Gigabit SFP slots

Beschreibung

Der wohl kleinste industrietaugliche 10-Port Gigabit Web-Managed Switch EX-62035M-SFP bietet trotz seiner geringen AussenmaÙe volle Gigabit Leistung an allen Ports. Die beiden SFP-Slots ermöglichen die Einbindung in ein Glasfaser-Netzwerk. Passende SFP-Transceiver sind als Zubehör erhältlich. Dank dem robusten Metallgehäuse und dem erweiterten Betriebstemperaturbereich von -40°C bis 80°C ist er für eine Vielzahl von Anwendungen auch in rauen Umgebungen geeignet. Die Stromversorgung erfolgt über den Terminal Block (12-48VDC) und kann zur Verminderungen von Betriebsausfällen auch redundant erfolgen.

Description

The EX-62035M-SFP is probably the smallest industrial-grade 10-port Gigabit web-managed switch and offers full Gigabit performance on all ports despite its small external dimensions. The two SFP slots enable integration into a fibre optic network. Suitable SFP transceivers are available as accessories. Thanks to the robust metal housing and the extended operating temperature range from -40°C to 80°C, it is suitable for a variety of applications, even in harsh environments. Power is supplied via the terminal block (48-57VDC) and can also be redundant to reduce operational failures.

Merkmale

Features

<ul style="list-style-type: none"> • 8x 10/100/1000T RJ45-Port, 2x 100/1000X SFP Slot, auto detection 	<ul style="list-style-type: none"> • 8x 10/100/1000T RJ45-Port, 2x 100/1000X SFP slot, auto detection
<ul style="list-style-type: none"> • Web-Managed: Browserbasierter Zugriff zur einfachen Installation und Verwaltung 	<ul style="list-style-type: none"> • Web-managed: Browser-based access for easy installation and management
<ul style="list-style-type: none"> • Auto-MDI/MDIX macht Crossover-Kabel überflüssig 	<ul style="list-style-type: none"> • Auto-MDI/MDIX eliminates the need for crossover cables
<ul style="list-style-type: none"> • Unterstützt Auto-Negotiation und 10/100Mbps Halb-/Voll duplex und 1000Mbps Voll duplex 	<ul style="list-style-type: none"> • Supports auto-negotiation and 10/100Mbps half/full duplex and 1000Mbps full duplex
<ul style="list-style-type: none"> • Unterstützt Jumbo Frames bis 9kBytes 	<ul style="list-style-type: none"> • Supports jumbo frames up to 9kBytes
<ul style="list-style-type: none"> • Terminal Block für redundanten DC-Eingang, 2x 12 V bis 48 VDC 	<ul style="list-style-type: none"> • Terminal block for redundant DC input, 2x 12 V to 48 VDC
<ul style="list-style-type: none"> • Robustes, sehr kompaktes Metallgehäuse, IP40 	<ul style="list-style-type: none"> • Rugged, very compact metal housing, IP40
<ul style="list-style-type: none"> • Inkl. DIN-Rail Kit 	<ul style="list-style-type: none"> • Includes DIN-Rail Kit and wall mounting bracket
<ul style="list-style-type: none"> • Erweiterter Betriebstemperaturbereich von -40°C bis +80°C 	<ul style="list-style-type: none"> • Extended operating temperature range from -40°C to +80°C

System / OS

Geprüft / Approved

Verpackung / Packaging



Spezifikation

Specification

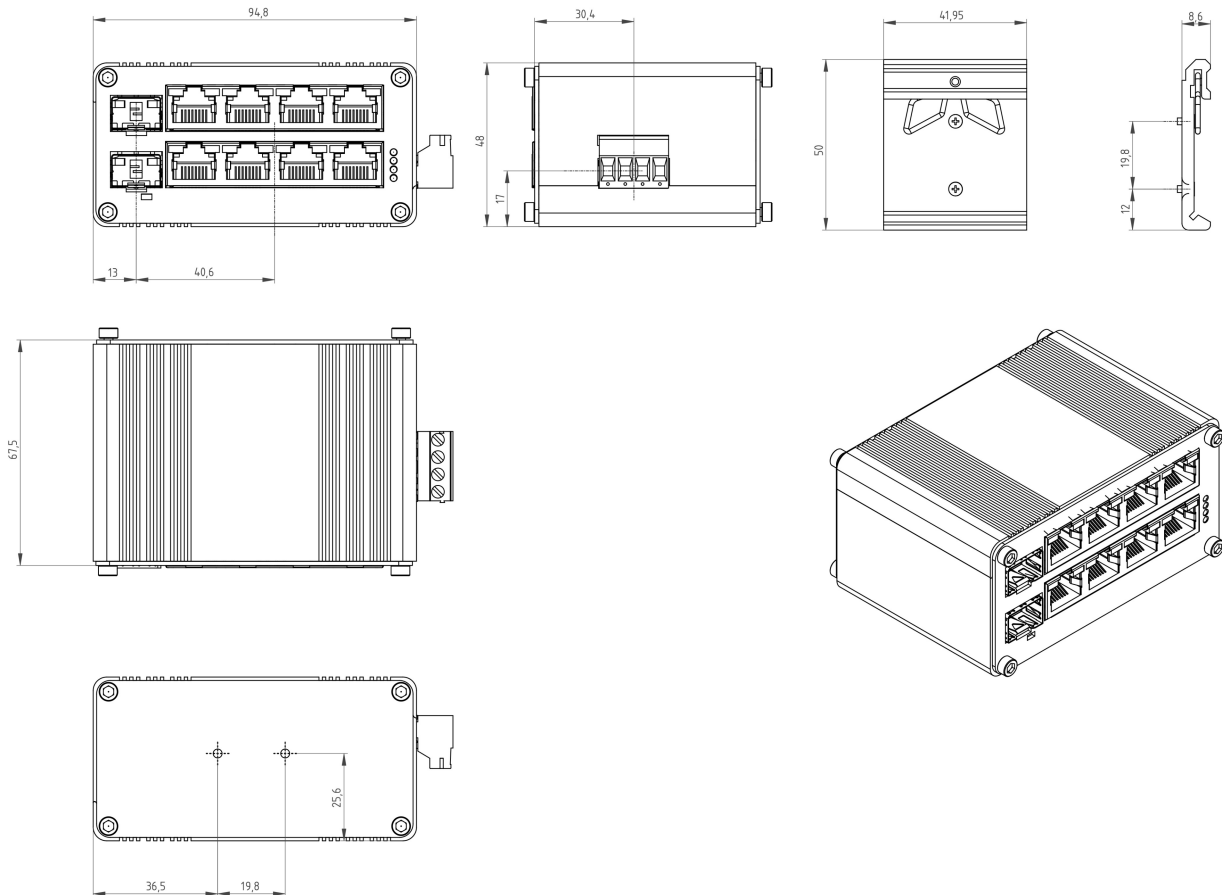
Datentransfer-Rate:	10/100/1000 Mbit/s	Data transfer rate:	10/100/1000 Mbit/s
Anschlüsse:	8x RJ45-Buchse 2x SFP-Buchse, auto detection 1x Terminal Block +12V bis +48V	Connectors:	8x RJ45 Port 2x SFP slot, auto detection 1x Terminal Block +12V to +48V
Hardwaresysteme:	Ethernet 10/100/1000Mbps, SFP 100/1000Mbps	Hardware system:	Ethernet 10/100/1000Mbps, SFP 100/1000Mbps
Betriebssysteme:	Für alle Betriebssysteme geeignet	Operating systems:	Suitable for all operating systems
Ethernet Standards	IEEE 802.3 Ethernet IEEE 802.3u Fast Ethernet IEEE 802.3ab Gigabit Ethernet IEEE 802.3x Full-Duplex Flow Control IEEE 802.3az Energy Efficient Ethernet (EEE)	Ethernet Standards	IEEE 802.3 Ethernet IEEE 802.3u Fast Ethernet IEEE 802.3ab Gigabit Ethernet IEEE 802.3x Full-Duplex Flow Control IEEE 802.3az Energy Efficient Ethernet (EEE)
Forward & Filtering Rate:	14'880 pps (10Mbps) 148'800 pps (100Mbps) 1'488'000 pps (1000Mbps)	Forward & Filtering Rate:	14'880pps (10Mbps) 148'800pps (100Mbps) 1'488'000pps (1000Mbps)
Paketpuffer:	2.75 Mbits	Packet Buffer:	2.75Mbits
Paketlänge:	9216 bytes	Packet Length:	9216bytes
MAC-Adresstabelle:	4000 Einträge	MAC Address Table:	4000 entries
Switching Fabric:	10 Gbps/non-blocking	Switching Fabric:	10Gbps/non-blocking
Backplane Bandbreite:	20 Gbps	Backplane bandwidth:	20Gbps
Paket-Weiterleitungsrate:	14.88 Mpps	Packet forwarding rate:	14.88Mpps
MTBF:	> 200'000 Stunden	MTBF:	> 200'000 hrs
Zulassungen:	ISO9001 EN55022:2010+AC: 2011, Class A EN 61000-3-2: 2006+A1: 2009+A2: 2009 EN 61000-3-3: 2013 EN55024:2010 IEC 61000-4-2: 2008 (ESD) IEC 61000-4-3: 2010 (RS) IEC 61000-4-4: 2012 (EFT) IEC 61000-4-5: 2014 (Überspannung) IEC 61000-4-6: 2013 (CS) IEC 61000-4-8: 2009 (PFMF)	Regulatory Approvals:	ISO9001 EN55022:2010+AC: 2011, Class A EN 61000-3-2: 2006+A1: 2009+A2: 2009 EN 61000-3-3: 2013 EN55024:2010 IEC 61000-4-2: 2008 (ESD) IEC 61000-4-3: 2010 (RS) IEC 61000-4-4: 2012 (EFT) IEC 61000-4-5: 2014 (Surge) IEC 61000-4-6: 2013 (CS) IEC 61000-4-8: 2009 (PFMF)
Betriebstemperatur :	-40°C bis +80°C Celsius	Operating temperature :	-40°F up to 176°F
Lagertemperatur:	-40°C bis +85°C Celsius	Storage temperature:	-40°F up to 185°F
Rel. Luftfeuchtigkeit:	5% bis 95%	Rel. Humidity:	5% to 95%
Schutzklasse:	IP 40	Protection class:	IP 40
Stromversorgung:	2x +12V bis +48V (Terminal Block), redundant	Power Supply:	2x +12V to +48V (Terminal Block), redundant
Leistungsaufnahme:	<5 W	Power Consumption:	<5W
Abmessung:	95.00 x 79.00 x 46.00 mm	Size:	95.00 x 79.00 x 46.00 mm
Gewicht:	280 g	Weight:	280 g
EAN:	4718359620317	EAN:	4718359620317
Ursprungsland:	China	Country of origin:	China
Lieferumfang:	EX-62035M-SFP, DIN-Rail Kit (vormontiert), Handbuch	Packaging contents:	EX-62035M-SFP, DIN-Rail Kit (pre-assembled), Manual

Verwaltung

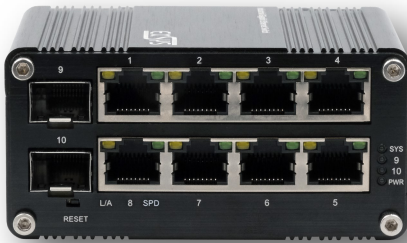
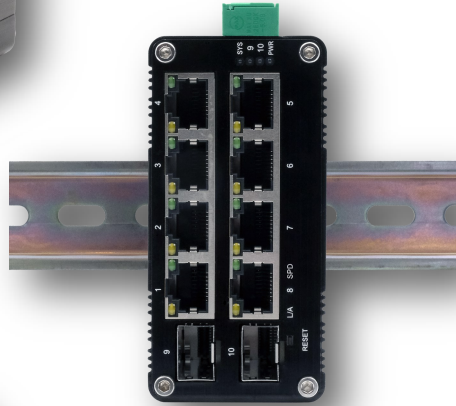
Management

Verwaltungsfunktion:	Web	Management Function:	Web
Redundanzprotokolle:	STP/RSTP	Redundancy Protocols:	STP/RSTP
Multicast-Unterstützung:	IGMP Snooping V1/V2/V3	Multicast Support:	IGMP Snooping V1/V2/V3
VLAN:	IEEE 802.1Q 4K VLAN	VLAN:	IEEE 802.1Q 4K VLAN
QOS:	Port 1Q ACL DSCP CVLAN SVLAN DA SA Port Priority Queue Weight	QOS:	Port 1Q ACL DSCP CVLAN SVLAN DA SA Port Priority Queue Weight
Diagnostische Wartung:	Port Mirroring Syslog Ping	Diagnostic Maintenance:	Port Mirroring Syslog Ping
Sicherheit:	Broadcast/Multicast Storm Protection MAC Filtering MAC Restriction	Security:	Broadcast/Multicast Storm Protection MAC Filtering MAC Restriction

Maße / Dimension



Bilder / Pictures



Zubehör / Accessories

EX-SFP-0055	SFP Transceiver	Duplex LC	Multimode	550/330 m	Operating Temperature: -40°C - +85°C
EX-SFP-2000	SFP Transceiver	Duplex LC	Singlemode	20 km	Operating Temperature: -40°C - +85°C
EX-6980	Netzteil / Power Supply	HDR-60-12	Output: DC 12V/4.5A/54W	Input: 85V - 264VAC	Operating Temperature: -30°C - +70°C
EX-6974	Netzteil / Power Supply	HDR-100-24	Output: DC 24V/3.83A/92W	Input: 85V - 264VAC	Operating Temperature: -30°C - +70°C
EX-6945	Netzteil / Power Supply	SDR-120-48	Output: DC 48V/2.5A/120W	Input: 85V - 264VAC	Operating Temperature: -25°C - +70°C
EX-K1110	Kabel / cable DC-Jack to Terminal Block				

EX-SFP-0055



EX-SFP-2000



EX-6980



EX-6974



EX-6945



EX-K1110

